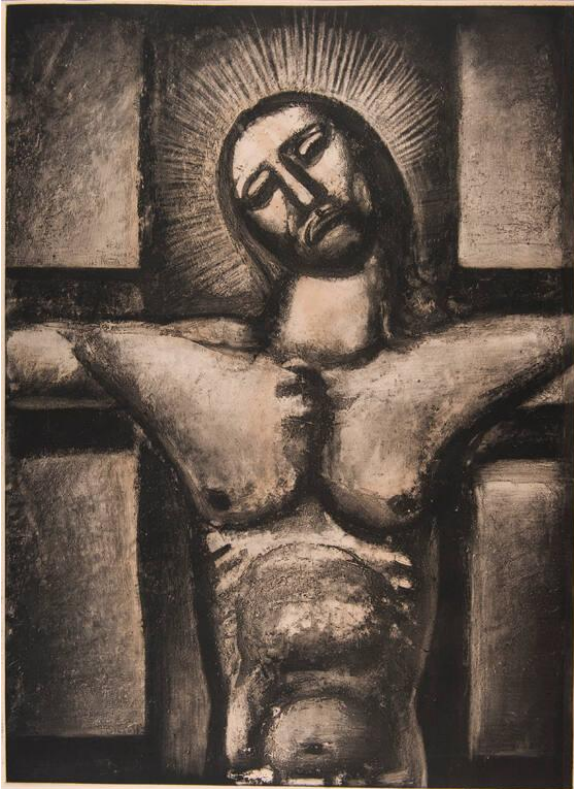


Basic Detail Report



MISERERE (plate 57): “Obéissant jusqu’ à la mort et à mort de la croix”

Date

1922–1927

Primary Maker

Georges Rouault

Medium

Engraving, aquatint on Arches vellum

Dimensions

31 1/2 x 15 3/4 in. (80.0 x 40.0 cm)

Classifications

Prints

Credit Line

Gift of Colonel Kenneth R. Bland

Object number

G.71.43.1/57

Provenance

Commissioned by Ambroise Vollard (1866–1939), Paris, 1916; plates created France, 1922–1927; printed by Société d'Édition l'Étoile Filante, Paris, 1948. Colonel Kenneth R. Bland (1923–1981), Arlington, VA; given to NCMA, 1971.

Published References

"Acquisitions," North Carolina Museum of Art Bulletin 12, nos. 1 and 2 (December 1973), entire portfolio mentioned 21, listed 57.